



AI Augmented Library

From governance to delivery

Masud Khokhar
University of Leeds

X: @mkhokhar

Bsky: @mkhokhar.bsky.social

Email: m.khokhar@leeds.ac.uk



ABOUT

University of Leeds

A large University within UK Higher Education

Over 39000 students and 9500 staff

A values driven, world top 100 University





ABOUT

University of Leeds Libraries

Five library sites

Brotherton Research Centre

Two public access Galleries

Circa. 300 staff members

Knowledge for All: Our vision for 2030

ABOUT

Masud

A computer scientist by education

Libraries in the DNA

University Librarian & Keeper of the

Brotherton Collection

Director of Learning Spaces

Chair of Research Libraries UK (RLUK)





“

AI – A case study
of where we are
and where we are
going next...

”

UNIVERSITY OF LEEDS

Digital Transformation Strategy

<https://spotlight.leeds.ac.uk/strategy-digital-transformation/>

Provide high-quality, flexible, secure, interoperable user-focused technology and development environments.

Provide effective institutional platforms and support for specialised research in areas including high performance computing, **artificial intelligence/deep learning**, blockchain, Internet of Things, robotics, extended (immersive) realities, simulations and programming.

Develop our use of digital technologies, data and digital approaches to reduce digital poverty and other inequalities and enhance our global reach and impact in education and research and innovation.

LIBRARIES VISION FOR 2030

Knowledge for All

<https://spotlight.leeds.ac.uk/libraries-vision/>

DIGITAL
Futures

A culture of innovation

OPEN
Higher Education

Opportunities for all

SUSTAINABLE
Environments

Meaningful partnerships

ENRICHED
Experiences

LIBRARIES VISION FOR 2030

Knowledge for All

<https://spotlight.leeds.ac.uk/libraries-vision/>

instill our students with transferrable digital skills...

develop a holistic, user-focused, personalised digital experience for our users through audience and behaviour mapping, data analytics, and **machine learning**.

open debate on digital and information poverty, digital inequalities, and ethics of technologies...

provide environments that encourage disruptive, creative and innovative thinking through invention labs, digital accelerators, entrepreneurs in residence, makerspaces and editathons.

... libraries as labs for interdisciplinary experimentation.

embrace and actively pursue technologies to add value to our users' experience. ... explore application of linked data, **artificial intelligence**, and extended reality in Libraries.

LOOKING TOWARDS A BRIGHTER FUTURE

Impact of AI on Library

Dr. Luba Pirgova-Morgan was appointed as the inaugural **Research Officer – AI in Libraries** at the University of Leeds.

Looking towards a brighter future:
the potentiality of AI and digital
transformations to library spaces



UNIVERSITY OF LEEDS

LATE 2022 - 2023

Generative AI becomes mainstream

AI has a major impact on how we assess our students, potential for productivity gains, and improvement in research processes.

“

Russell Group
principles on
use of AI tools
in education

”

July 2023

GOVERNANCE

Working Groups



Research – WAITR



Education – WAISE



Services – None

WAISE

Focus on advocacy

Staff guidance

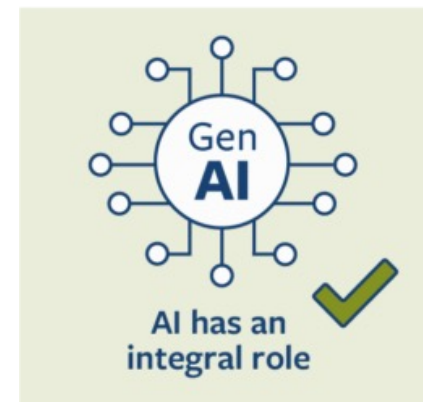
<https://generative-ai.leeds.ac.uk/staff-guidance/>

Co-produced student guidance

<https://generative-ai.leeds.ac.uk/uol-genai-guidance-for-taught-students/>

What do students at Leeds think of Generative AI?

<https://youtu.be/hu1lViHfEQM>



EXPERIMENTATION

Microsoft M365 Copilot



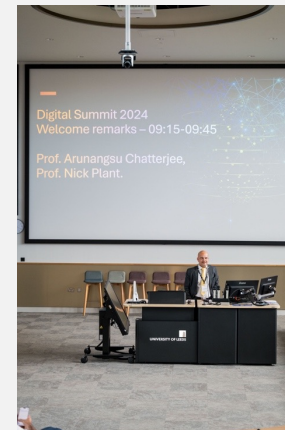
Library

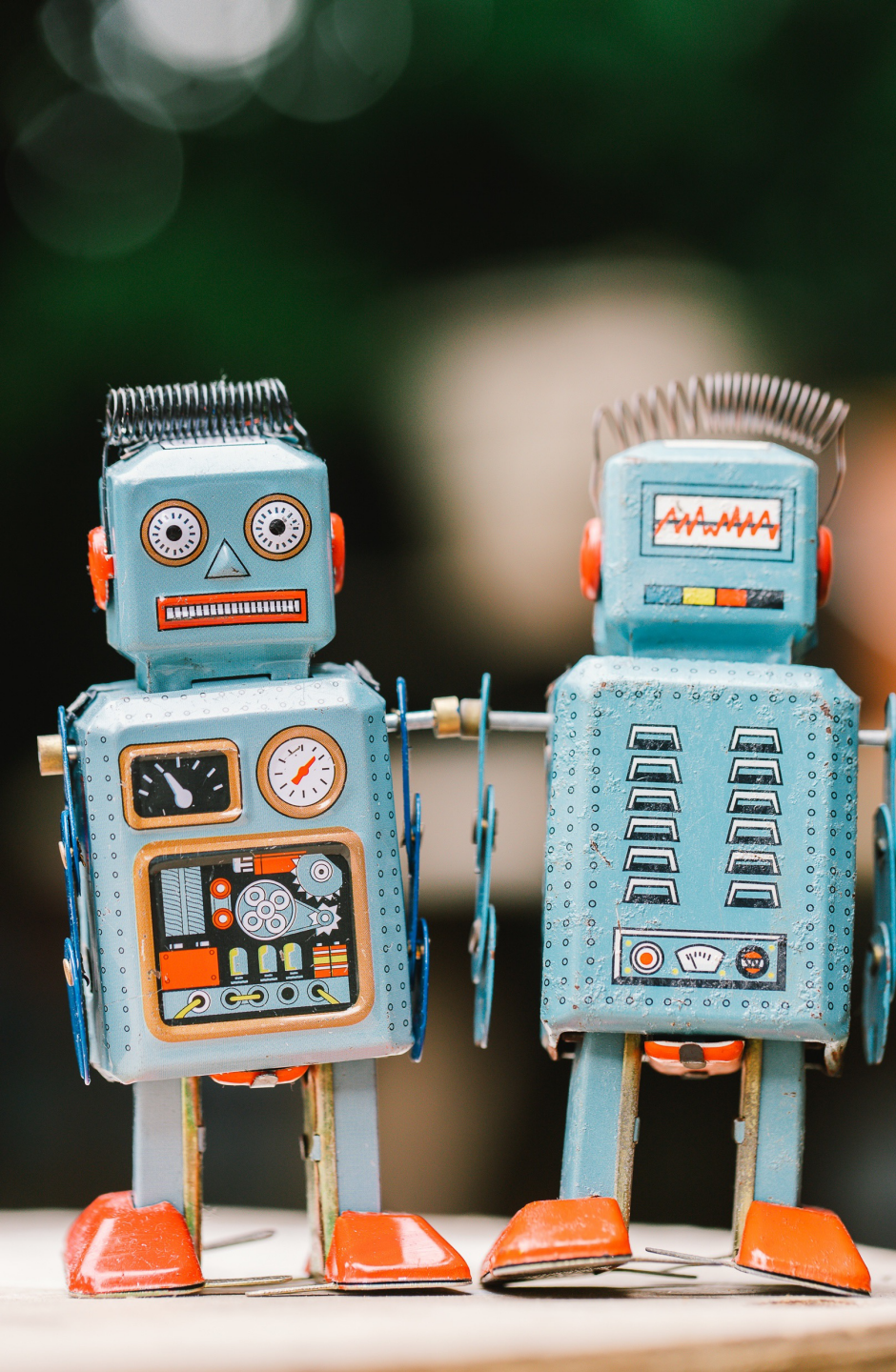
IT Services

Digital Education Service

DIGITAL SUMMIT 2024

AI and Me





ARTIFICIAL INTELLIGENCE

A systems approach

Governance, Assessment, Learning Outcomes, Student Cases, Graduate Attributes, Research Processes, General Productivity, Experimentation, Ethics, Advocacy, Licensing, Training, Investment, Events, Cultural change – a whole systems approach.

AI – A SYSTEMS APPROACH

Rethinking our future

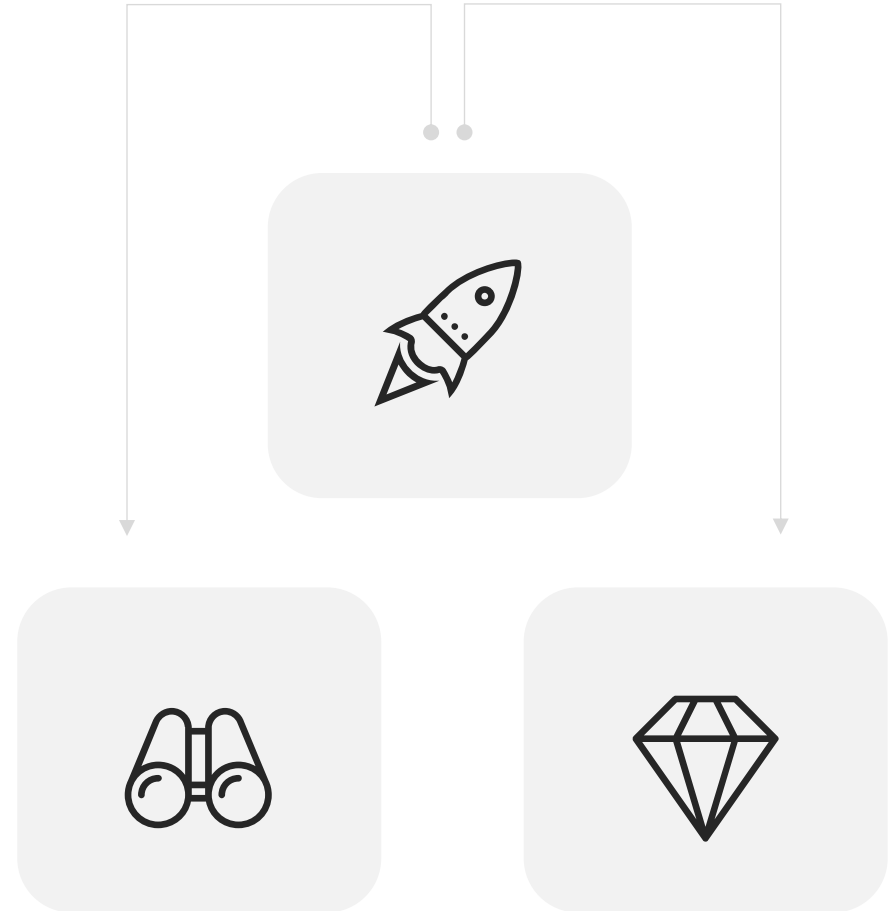
Agility, Equity, and Clarity in Governance.

Four likely **AI Working Groups** – Education, Research, Services, Ethics

Strategic Development Funding – To fund experimentation, sandpits, initiatives, strategic advantage, industry partnerships, licenses.

AI Community of Practice – Peer and wider support.

Digital Capabilities AI subgroup – looking at training and literacy activities for staff and students.



AI – A COLLABORATIVE APPROACH

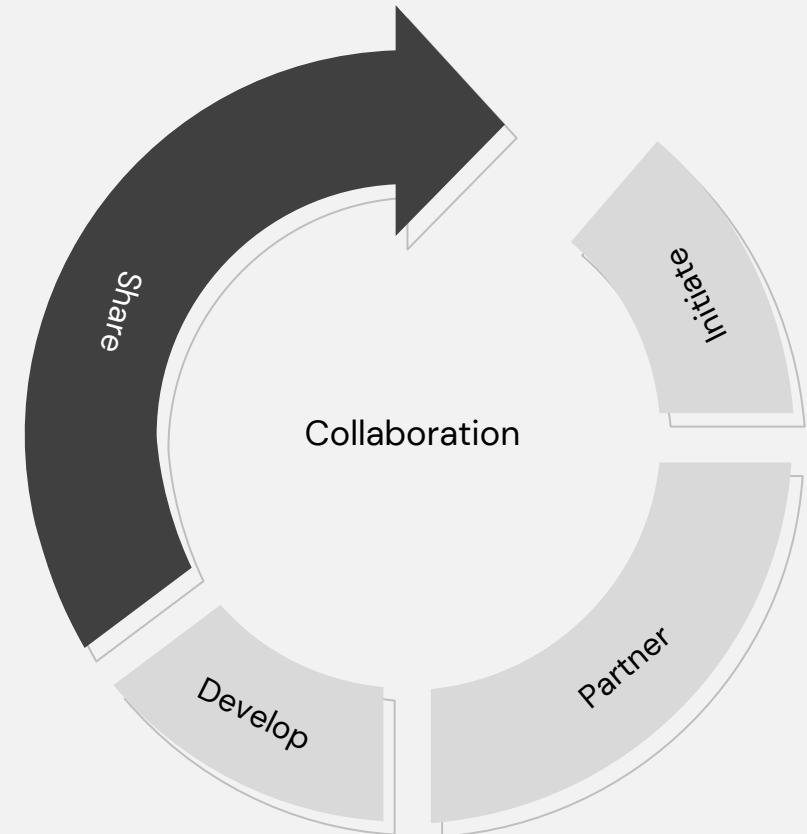
Rethinking our future

Discipline specific guidance development initiated at RLUK level.

New partnership development with Universities of Chicago and Northwestern in AI initiatives.

Expanding on existing partnership with CUHK on data hackathons and AI interventions.

Developing Library AI roadmap, with the key aim to develop digital dexterity and to encourage experimentation and workload reductions.



THIS IS JUST THE START

A lot more to do!

Happy to take any questions or thoughts.

X: @mkhokhar

Bsky: @mkhokhar.bsky.social

Email: m.khokhar@leeds.ac.uk

Or connect with me at LinkedIn

